

# 29F0418-1SR-10

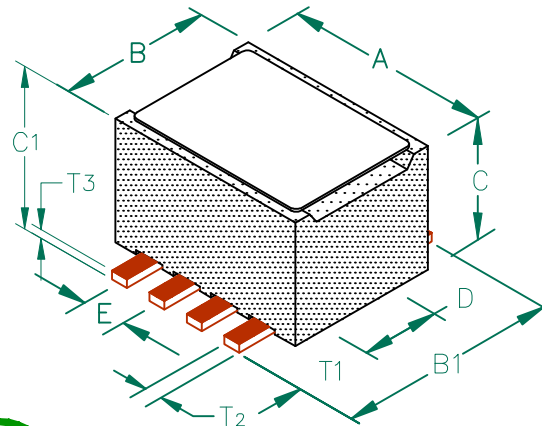
**UNCONTROLLED DOCUMENT**

PHYSICAL DIMENSIONS:

|    |             |                                |
|----|-------------|--------------------------------|
| A  | 6.10 [.240] | + 0.13 [.005]                  |
| B  | 4.50 [.177] | + 0.08 [.003]<br>- 0.10 [.004] |
| B1 | 7.04 [.277] | + MAX                          |
| C  | 4.19 [.165] | + 0.10 [.004]                  |
| C1 | 4.83 [.190] | + MAX                          |
| D  | 2.24 [.088] | + 0.08 [.003]                  |
| E  | 1.27 [.050] | + 0.13 [.005]                  |

WIRE DIMENSIONS:

|    |             |               |
|----|-------------|---------------|
| T1 | 2.16 [.085] | + 0.25 [.010] |
| T2 | 0.50 [.020] | + TYP.        |
| T3 | 0.25 [.010] | + TYP.        |



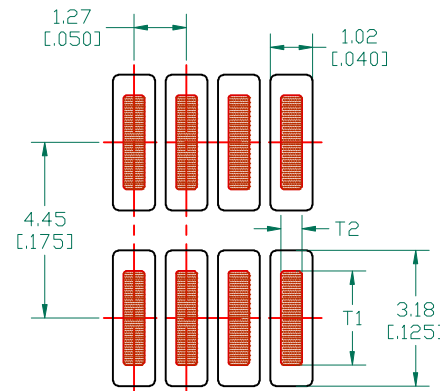
ELECTRICAL CHARACTERISTICS:

| Z @ 100MHz<br>( $\Omega$ ) | DCR<br>( $\Omega$ ) | Rated Current |
|----------------------------|---------------------|---------------|
| Nominal                    | 119                 |               |
| Minimum                    | 90                  |               |
| Maximum                    | 149                 | 6,000 mA      |

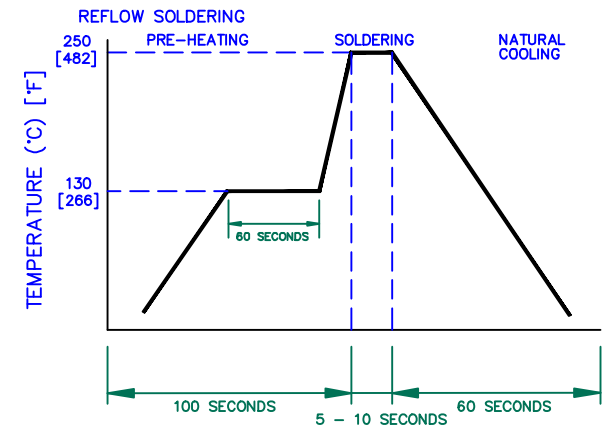
NOTES: UNLESS OTHERWISE SPECIFIED

1. TAPED AND REELED per CURRENT EIA SPECIFICATIONS 13" REELS, 900 PCS/REEL.
2. COMPONENTS SHOULD BE ADEQUATELY PREHEATED BEFORE SOLDERING.
3. REF. CARRIER TAPE SPECIFICATION # CART 418-13.
4. TERMINATION FINISH IS 100% TIN.

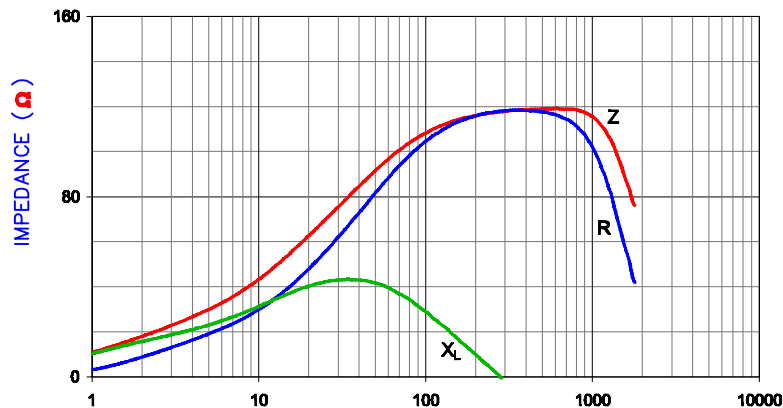
LAND PATTERNS FOR REFLOW SOLDERING



RECOMMENDED SOLDERING CONDITIONS



|Z| , R, AND X vs. FREQUENCY



**Z**      **R**      **X<sub>L</sub>**



|                                |                                 |          |     |   |                    |
|--------------------------------|---------------------------------|----------|-----|---|--------------------|
| DIMENSIONS ARE IN mm (INCHES). |                                 |          |     | This print is the property of Laird Tech. and is loaned in confidence subject to return upon request and with the understanding that no copies shall be made without the written consent of Laird Tech. All rights to design or invention are reserved. |                    |
| D                              | UPDATE COMPANY LOGO             | 10/21/08 | JRK | PROJECT/PART NUMBER:  | 29F0418-1SR-10     |
| C                              | UPDATE COMPANY LOGO             | 05/01/07 | JRK | REV   | D                  |
| B                              | CHANGE TOLS ON E DIMS, ADD ROHS | 03/19/07 | JRK | PART TYPE:  | ASSEMBLY           |
| A                              | ORIGINAL DRAFT                  | 04/27/04 | JRK | DATE:   | 04/27/04           |
| REV                            | DESCRIPTION                     | DATE     | INT | CAD #   | 29F0418-1SR-10-D-2 |
|                                |                                 |          |     | SCALE:  | NTS                |
|                                |                                 |          |     | SHEET:  | 2 of 3             |

